

Crime Overview 2024

Cambridge

CRIME OVERVIEW

The graphs in this theme are an overview of crime in the jurisdictions within the state of Massachusetts.

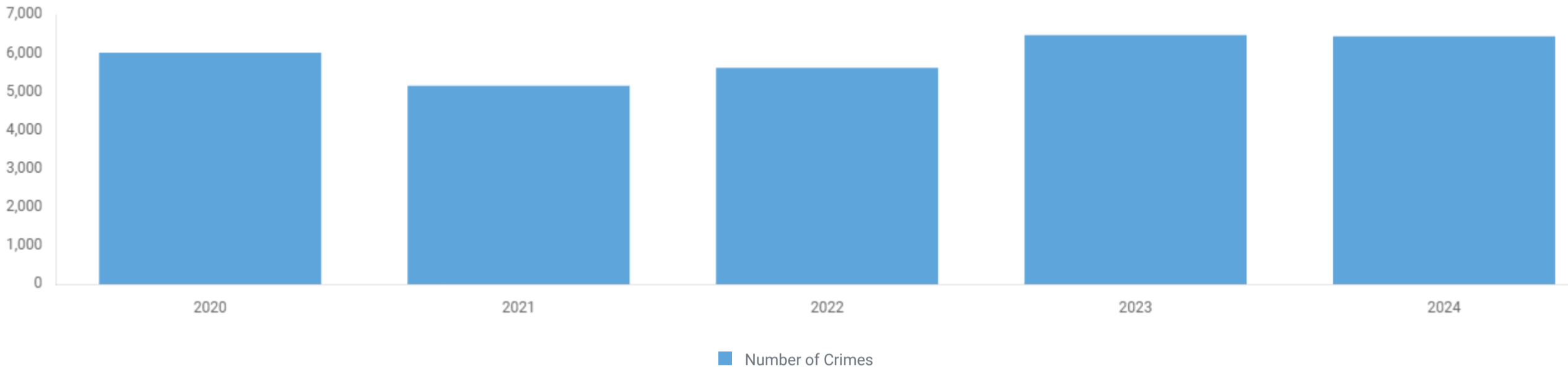
Number of Crimes: 6,442
Clearance Rate: 20.77%
Population: 118,960
Crime Rate: 5415.27 per 100,000

↓ -0.48%

Compared to 2023

CRIMES

Trend



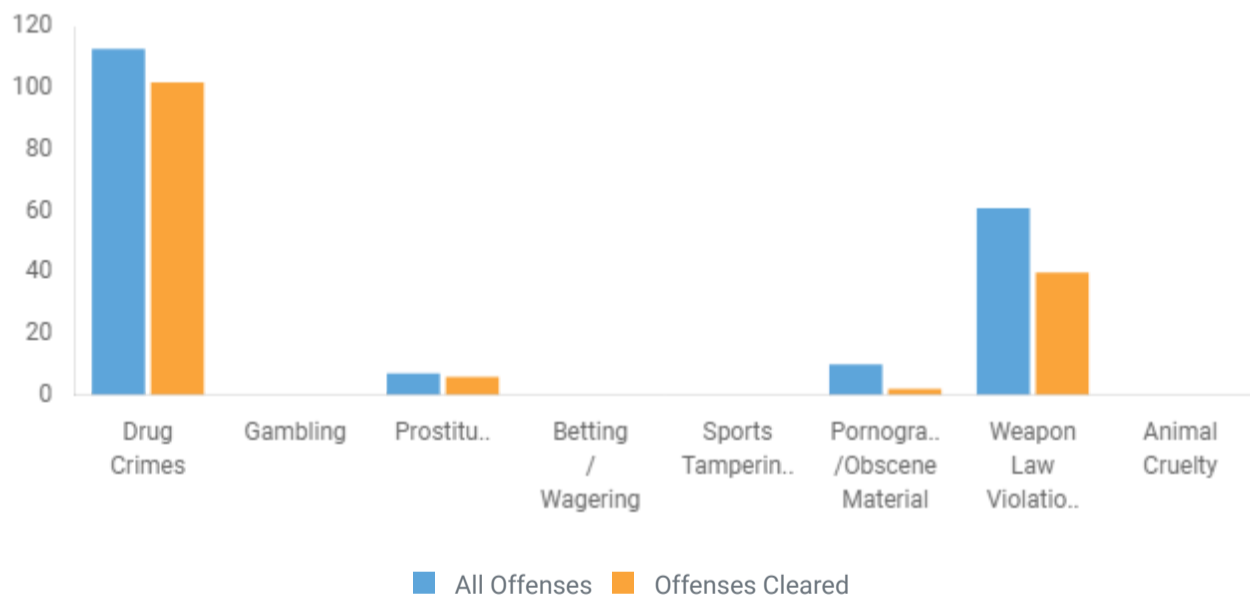
CRIMES AGAINST PERSON OFFENSES

Crimes where victims are always individuals



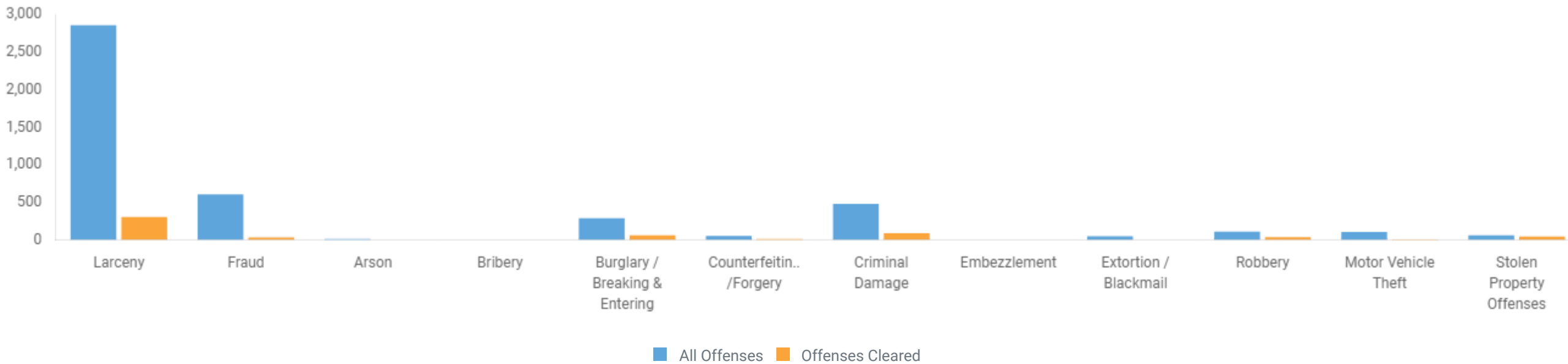
CRIMES AGAINST SOCIETY OFFENSES

Society crimes represent society's prohibition against engaging in certain types of activity; they are typically victimless crimes in which property is not an object.



CRIMES AGAINST PROPERTY OFFENSES

The object of a crime against property is to obtain money, property, or another benefit.



ARRESTS

An arrest is when the police use their legal authority to take someone into custody.

Number of Arrests: 1,359

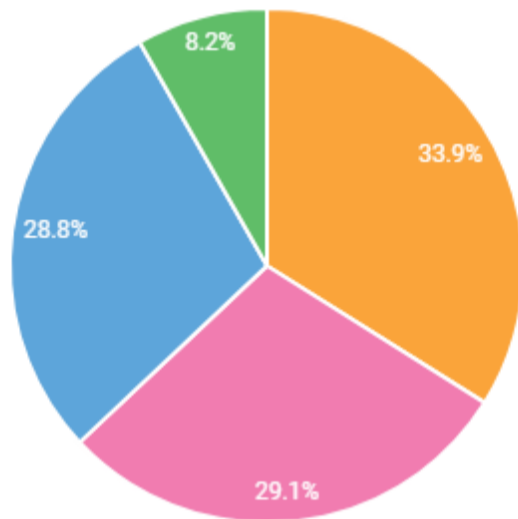
Population: 118,960

Arrest Rate: 1142.40 per 100,000

↑ 20.69%

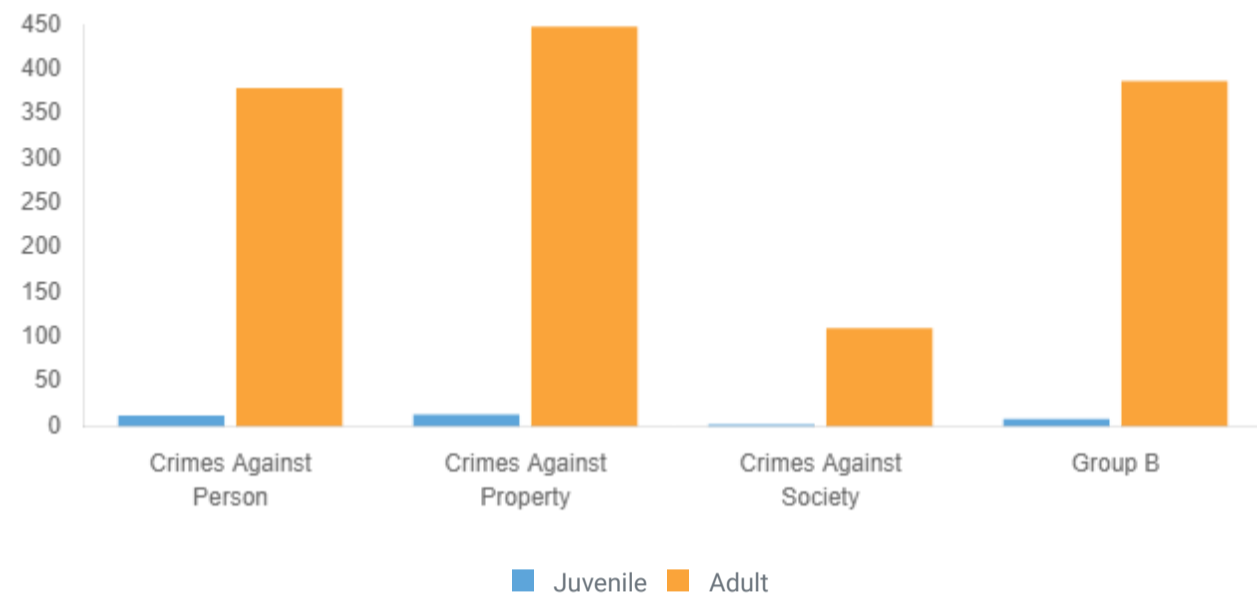
Compared to 2023

ARREST BREAKDOWN



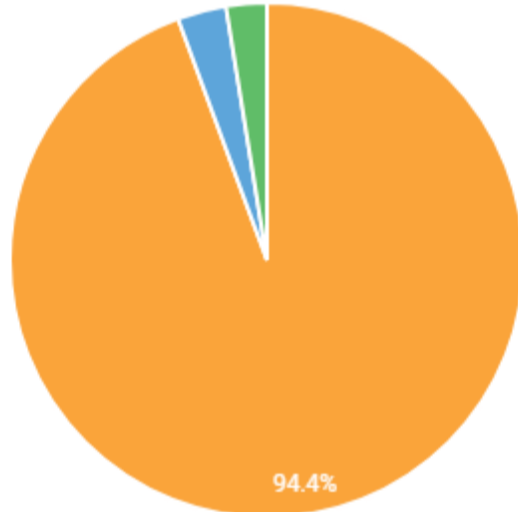
■ Crimes Against Property
 ■ Group B Offenses
 ■ Crimes Against Person
 ■ Crimes Against Society

ARRESTS JUVENILE/ADULT



CRIMES AGAINST PERSON ARRESTS

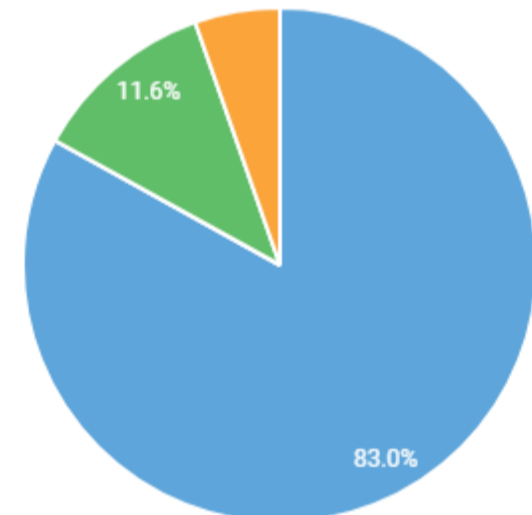
The object of a crime against property is to obtain money, property, or another benefit.



■ Assaults
 ■ Sex Offenses
 ■ Kidnapping/Abduction

CRIMES AGAINST SOCIETY ARRESTS

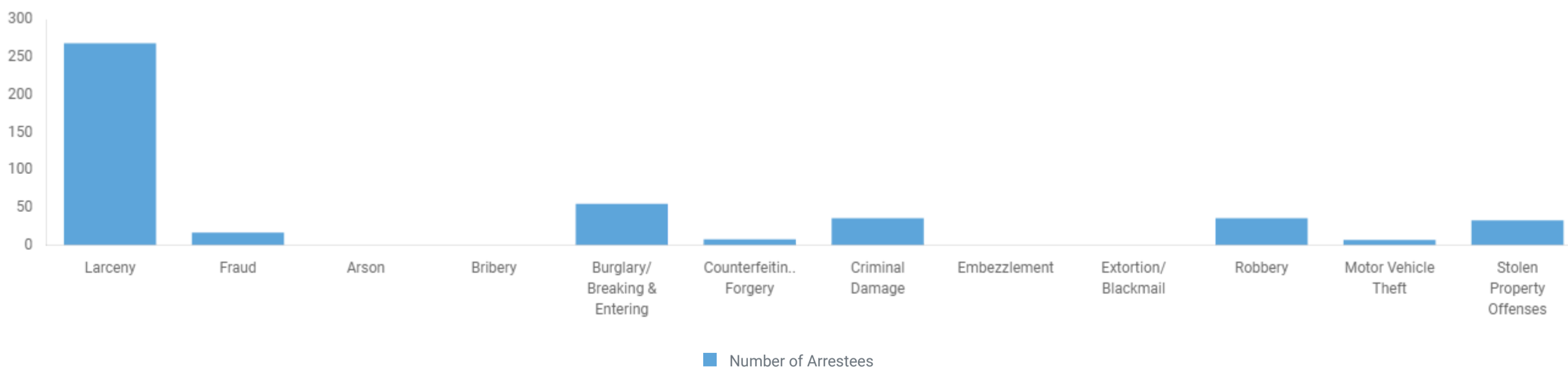
Society crimes represent society's prohibition against engaging in certain types of activity; they are typically victimless crimes in which property is not an object.



■ Drug Crimes
 ■ Weapon Law Violations
 ■ Prostitution Offenses

CRIMES AGAINST PROPERTY ARRESTS

The object of a crime against property is to obtain money, property, or another benefit.



■ Number of Arrestees

GROUP B ARRESTS

Group B offenses tend to be minor in nature. Only arrest information is tracked.

